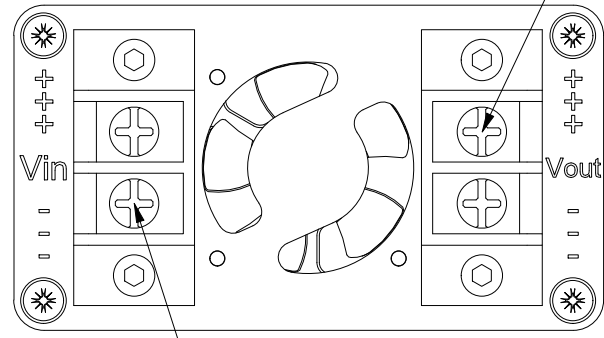


6 5 4 3 2 1

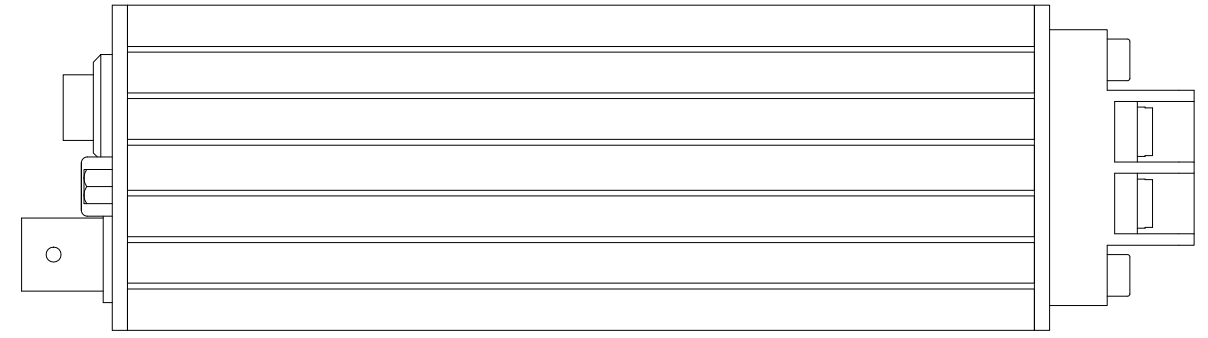
D

D

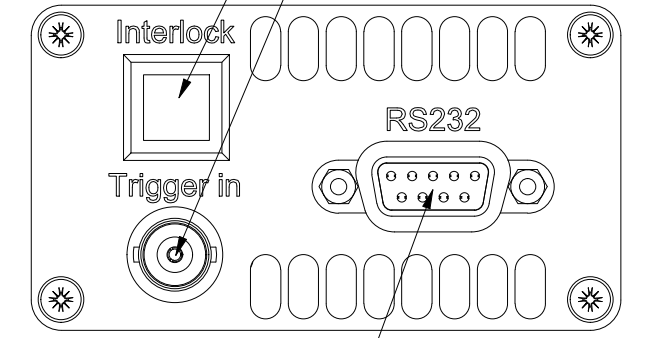
Connection between driver and laser
(terminal block 2-1437662-3)



Connection between power supply and driver
(terminal block 2-1437662-3)



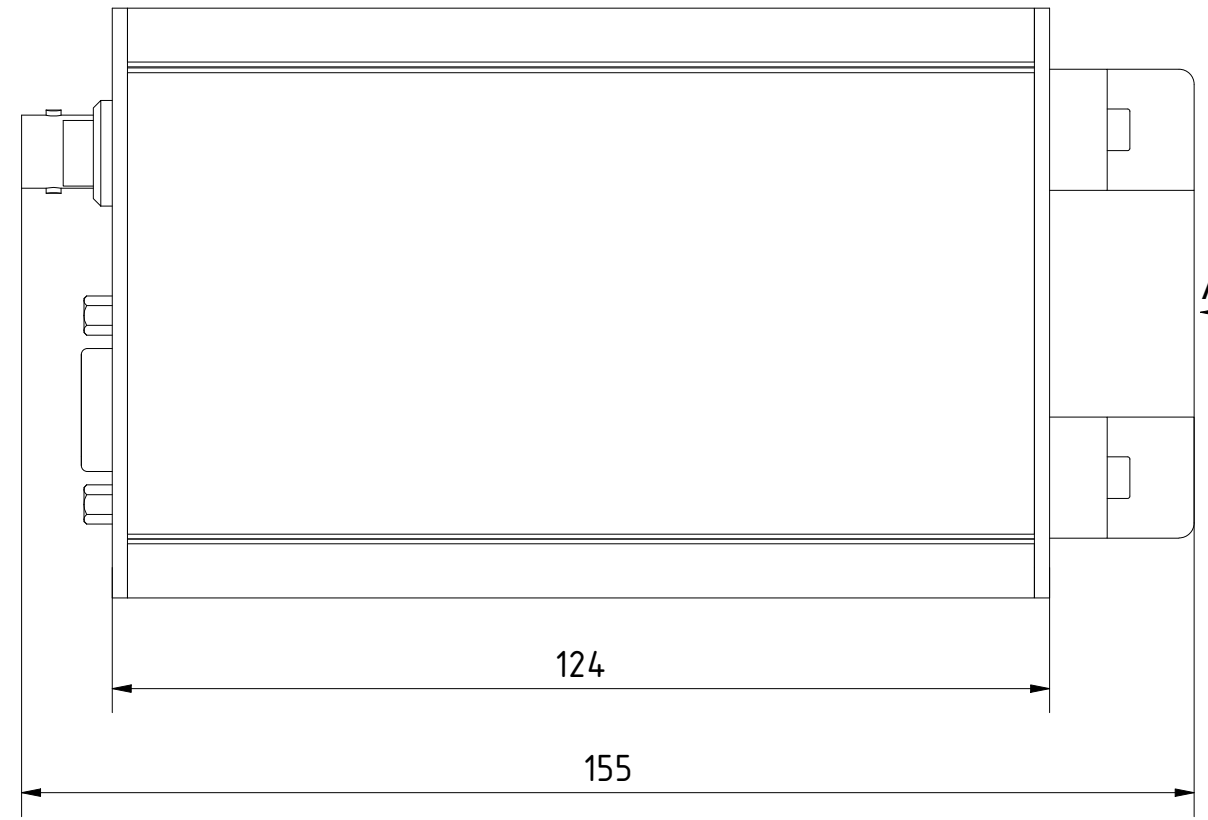
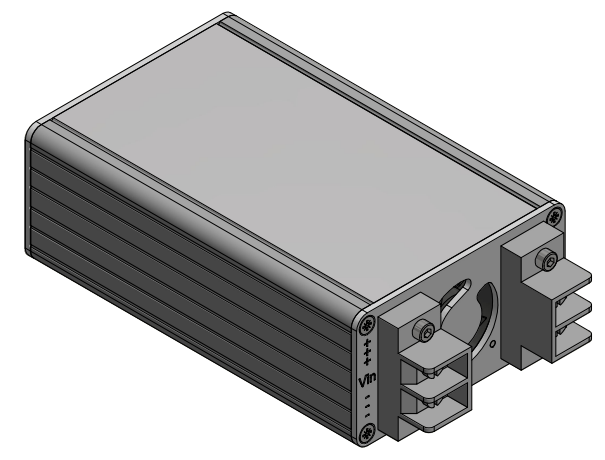
Interlock button
Trigger in (BNC F)



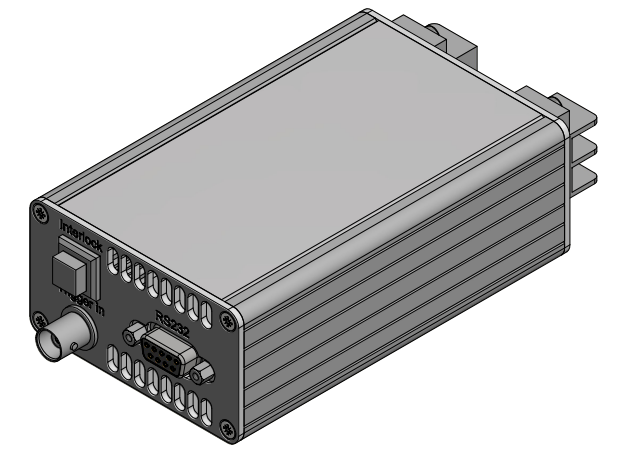
RS232 connection (DB9 F)

C

C



Air intake



B

B

A

A

! FOR INFORMATION ONLY NOT FOR MANUFACTURING PURPOSES !

Drawn	Date	Name	First angle projection	Finish:
	2021-10-29	J. Girskis		Black anodized
 UAB Optogama Mokslininku st. 2A, 08412 Vilnius, Lithuania			Title:	Scale:
			Table top laser diode driver	1 : 1
Part No.			Sheet nr.	
KDB_V1			1/1	
			A3	

6 5 4 3 2 1