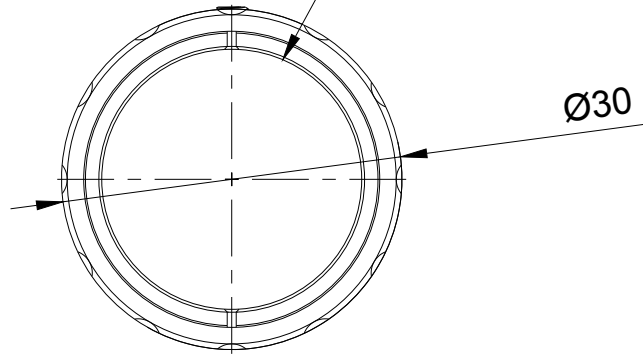
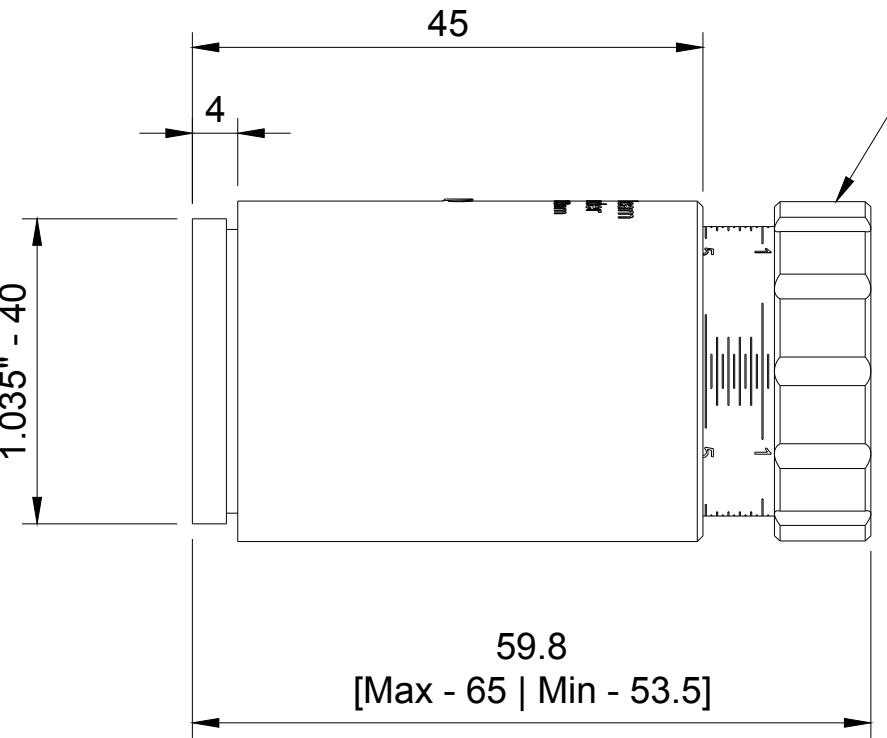


Output CA Ø23
Input CA Ø11.5

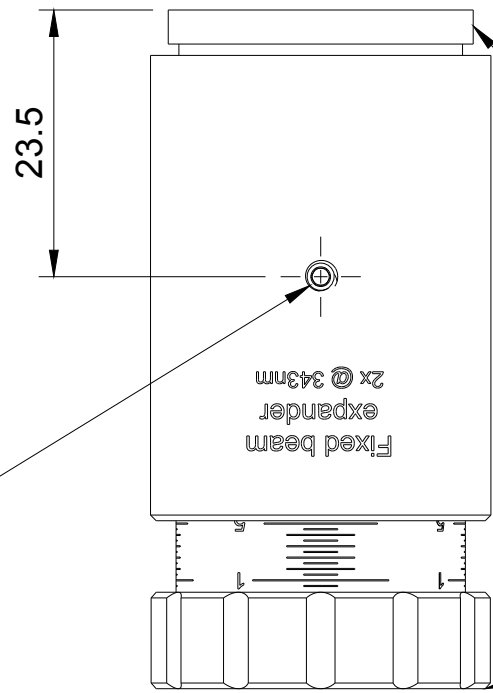


Ø30

THREAD SM1
1.035" - 40



Rotate to adjust
Divergence



23.5

Lock screw
M3x0.5

Fixed beam
expander
2x @ 343nm

Default mounting thread:
SM1 Male


Available mounting adapters:
SM1 Male to M30x1 Male
SM1 Male to C-Mount [1" - 32 UN]

Default mounting thread:
SM1 Female [max 2.3mm]

Available mounting adapters:
SM1 Female to M30x1 Male



FOR INFORMATION ONLY
NOT FOR MANUFACTURING PURPOSES

Dept.	Technical reference 1.5:1	Created by Optogama 18/07/2018	Approved by
		Document type	Document status
		Title FEX2X-343 fixed beam expander 2X @ 343nm	DWG No. FEX2X-343
Rev.	Date of issue	Sheet 1/1	