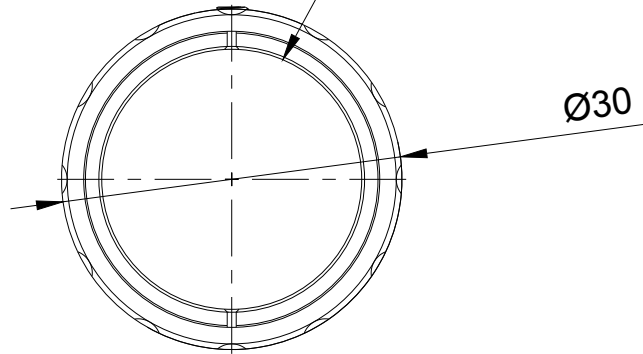
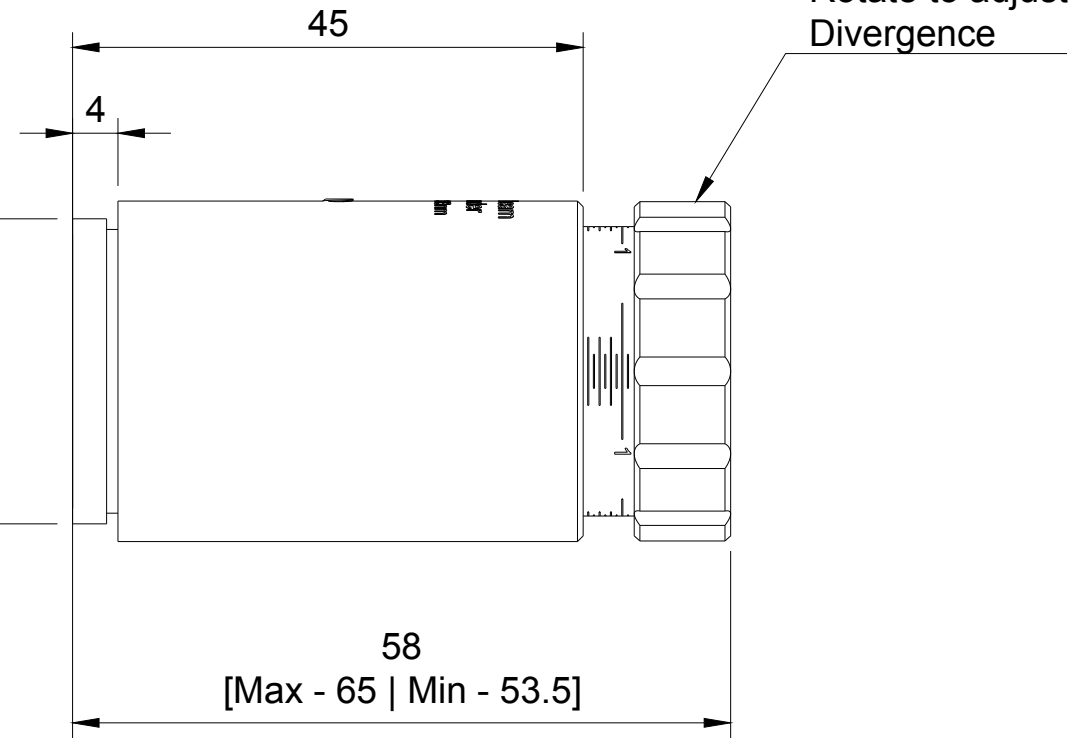


Output CA Ø23
Input CA Ø11.5



THREAD SM1
1.035" - 40

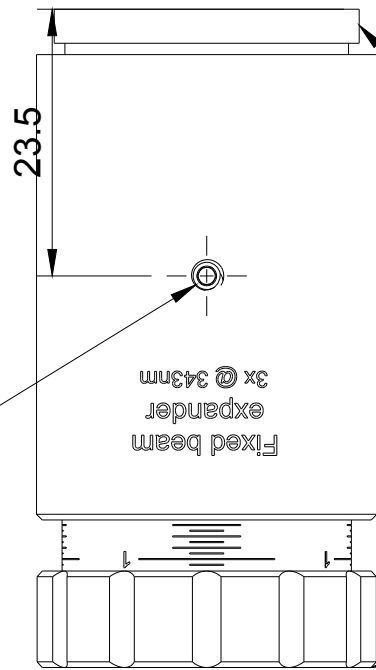


Default mounting thread:
SM1 Male

Available mounting adapters:
SM1 Male to M30x1 Male
SM1 Male to C-Mount [1" - 32 UN]

Default mounting thread:
SM1 Female [max 2.3mm]


Available mounting adapters:
SM1 Female to M30x1 Male



Lock screw
M3x0.5

Fixed beam
expander
3x @ 343nm

FOR INFORMATION ONLY
NOT FOR MANUFACTURING PURPOSES

Dept.	Technical reference 1.5:1	Created by Optogama 18/07/2018	Approved by
		Document type	Document status
		Title FEX3X-343 fixed beam expander 3X @ 343nm	DWG No. FEX3X-343
	Rev.	Date of issue	Sheet 1/1