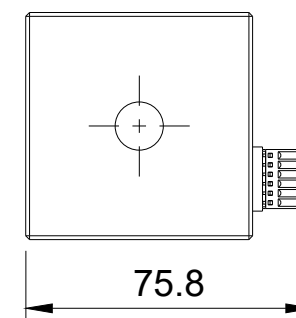
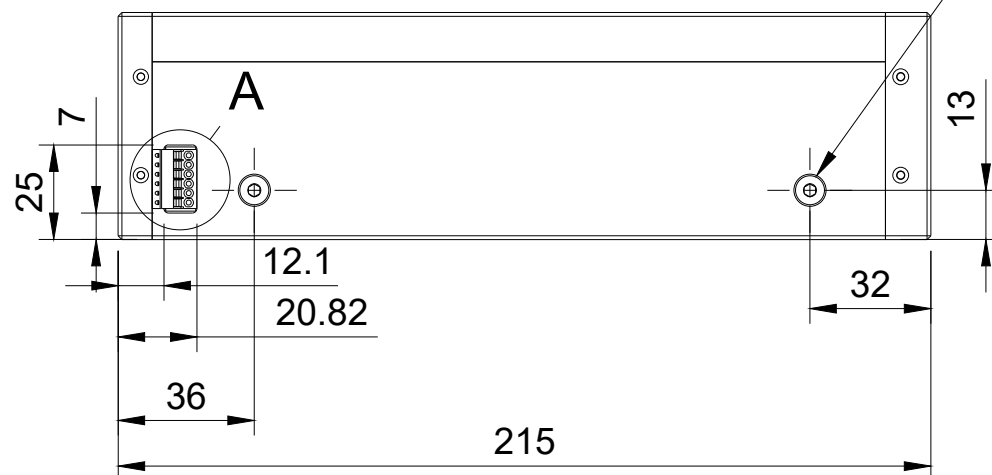
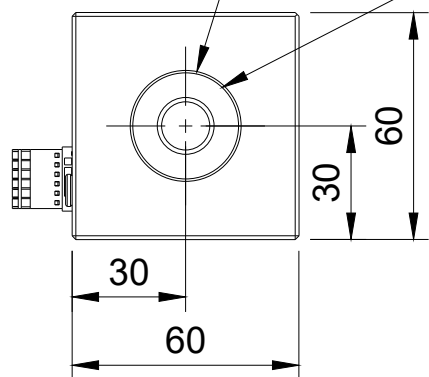


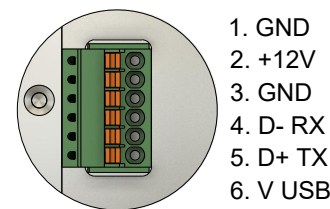
Optional protective windows  
for input and output  
with retaining rings.  
User serviceable

Input CA  $\varnothing$ 11.5  
Output CA  $\varnothing$ 28

M5x0.8  $\nabla$ 4  
2 vent holes for push in fittings  
Recomended pressure  
0.1-0.2 bar (1.5 - 3 PSI)



A (1:1)



691382000006 Wurth Electronic  
TERM BLOCK HDR 6POS VERT  
2.5MM

**!** FOR INFORMATION ONLY  
NOT FOR MANUFACTURING PURPOSES **!**



Finish Anodized/RAW Aluminium	Created by Optogama	3/18/2022
Title MEX13HP v3 High Power Motorized Beam Expander	DWG No. MEX13HP v3	
Scale 1:5	A3	Sheet 1/1